



2023
We make it real

Ergofit

The ideal task chair for the modern office

Specifications



Ergofit is the perfect fusion between ergonomics and functionality. Its impeccable design matches the needs of the user in a modern office environment, achieving greater comfort that translates into effectiveness.

The backrest is wrapped in elastic mesh offering comfort and transpirability. In addition it includes seat depth adjustable and height adjustable lumbar support in standard.





The synchronized mechanism with lateral tension regulation, 11 locking points and with a virtual pivot point in the knees, together with the anatomically designed seat, provides outstanding comfort.


The special design of the Ergofit chair seat allows the maximum pressure measured to be practically half of the maximum admissible (0.211 atmospheres) and the average pressure to be almost 7 times lower (0.057 atmospheres).

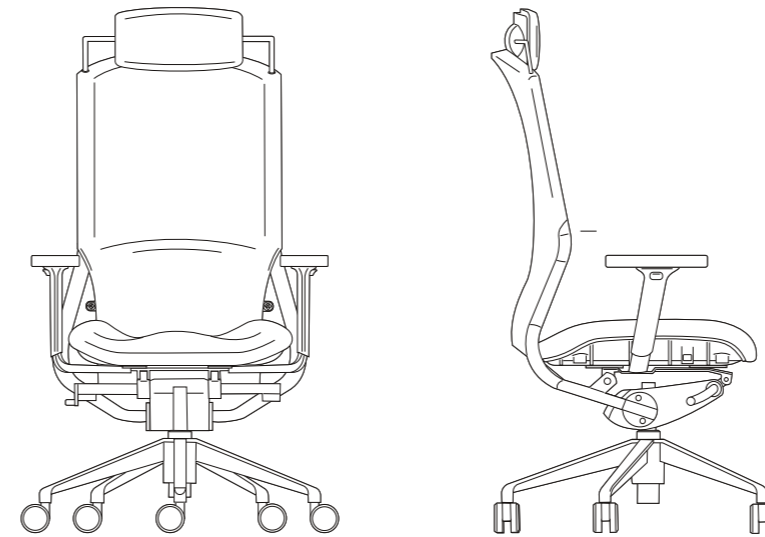


It has the possibility of two types of headrest. One adjustable in height with a perfect design for office work and another fixed directional style headrest.

It features a painted aluminum base with 65mm soft rolling wheels as standard and the possibility of a polished aluminum base.



 Dimensions:

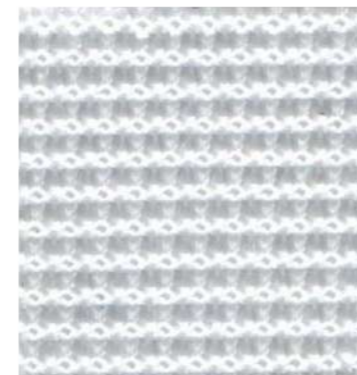


-  Height: 103-113cm*
-  Width: 68cm
-  Depth: 37-42cm*

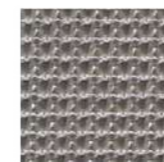
*Regulable sizes.

Composition: Polypropylene 100%
 Color fastness to light: 4,5 (UNE EN ISO 105-B02).
 Fastness of dyes to rubbing: 4/5 (UNE EN ISO 105-X12).
 Abrasion resistance: >25.000 cycles (UNE EN ISO 12947/2).
 Pilling: 4/5 (UNE EN ISO 12945/2).
 Cleaning: Wash with water and neutral soap.
 Rinse with clean water.
 Dry with a soft cloth.

Materials: Steel, elastic fabric, polyester, polypropylene.



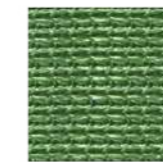
NR - White



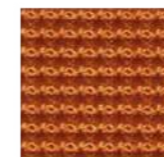
BA - Black



GR - Gray



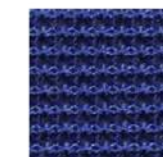
VR - Green



AR - Orange



RS - Red



BL - Blue



The life cycle analysis

All large plastic components are marked to **ISO 11469** for easy recycling. Textiles are available with a **European Ecolabel** that certifies their reduced environmental impact and with **Öko-Tex 100** that certify the absence of dangerous substances in them.

To reduce the energy consumed and the pollution generated, all the suppliers of components of the model are European. The paint on the metal parts does not generate volatile organic compounds and is free of heavy metals.

Packaging materials can include corrugated cardboard and LDPE bags. Elements made with high percentages (> **30%**) of recycled material and 100% recyclable. The routes as well as the capacity of our trucks are optimized individually, reducing energy consumption and the environmental impact of transport.

Being a product that does not consume energy, it does not generate relevant environmental aspects during the use phase.




Contact us at:

 rpg.es/en

 + 34 91 518 58

 rpg@rpg.es

 C/ Fernando Rey s/n esq. José Isbert, 10-12
Ciudad de la Imagen
28224 Pozuelo de Alarcón
Madrid – Spain

